



2009 System x and BladeCenter Technical Conference

July 27 – July 31, 2009 – Chicago, Illinois



**Run “vSphere in a box” on your laptop,
to learn, demonstrate, and test vCenter,
ESX4/ESXi4, VMotion, HA, and DRS.**

Session ID: XVI50

Paul Braren, IBM Systems Lab Services & Training

Authorized



Training

Does the idea of having a self-contained VMware infrastructure, complete with shared LAN and SAN resources, sound appealing to you? The potential for demonstration and training is enormous, and has been field tested by IBM Systems Lab Services. Imagine being able to explain and demonstrate the differences between ESX and ESXi to customers considering IBM servers bundled with VMware software, without reliance on lab or internet connectivity.

Prepare for pre-sales meetings, production deployments, or even VMware certification exams, at minimal cost, using just your laptop. VMware Workstation with iSCSI shared storage will be featured. Come see the configuration walk-thru and live demonstration!

Having taught about a half-dozen VMware JumpStarts and performed hundreds of VMware converter migrations, I've met many individuals who get excited about learning more about VMware products and features. I've been asked about how to run ESX based products right on a laptop or desktop, since most don't have fibre channel equipped labs at their disposal.

Attended VMworld 2007, where a USB key was given to all attendees with a beta of ESXi. A few VMware forum members and I used “creative” imaging of the USB key, and found ways to share it, and run it as a VM.

This got significant attention in the VMware community forums, even though it couldn't yet run a “nested” VM yet. Just booting ESX was a big deal in a VM then.



Attended VMworld 2008, inspiring me to get active in the forums again. Discovered some posts I made about how to get ESX 3.5 working in a VM were getting attention, including a Camtasia video “how to” I created.

Now, this summer, with vSphere just out and its ESX 4.0 and ESXi 4.0 pieces, I figured it was time to look carefully again at capabilities to run it all “in a box,” and take it to the next level by integrating shared storage to test vMotion, etc.

I really wanted to know how viable a solution this is for self-training for example, and to share just how to do it. The emphasis is on convenience, not on raw speed or power. I would like to do a step-by-step document as well, time-permitting.

First off, credit is due here for the excellent, just in time, step-by-step documentation provided by xtravirt.com's Paul Buckle, first published in late June 2009, only about a month after vSphere was released.

Tips to follow:

How to Install VMware ESX 4.0 on Workstation 6.5.2 as a VM

<http://xtravirt.com/xd10089>

How to Install VMware ESXi 4.0 on Workstation 6.5.2 as a VM

<http://xtravirt.com/xd10090>

Above directions have a pdf that will give you an issue with cut and paste:

```
monitor_control.restrict_backdoor = "TRUE"
```

should instead be:

```
monitor_control.restrict_backdoor = "TRUE"
```

Tips:

use private networking, allows use in any situation, even when physical wired or wireless network isn't attached, such as my demo rig during this demonstration

the VM for vCenter can have a 2nd routable NIC to the internet, allowing additional flexibility, easy updates, and even NTP time source and serving

reduce the ESX and ESXi memory footprint

2GB required during install, but can be reduced afterward with this trick

<http://www.yellow-bricks.com/2009/05/08/running-vsphere-within-workstation-will-take-up-a-lot-of-memory>

How to configure OpenFiler iSCSI Storage for use with VMware ESX

<http://www.vladan.fr/how-to-configure-openfiler-iscsi-storage-for-use-with-vmware-esx>

IBM's smarter planet – Dynamic Infrastructure

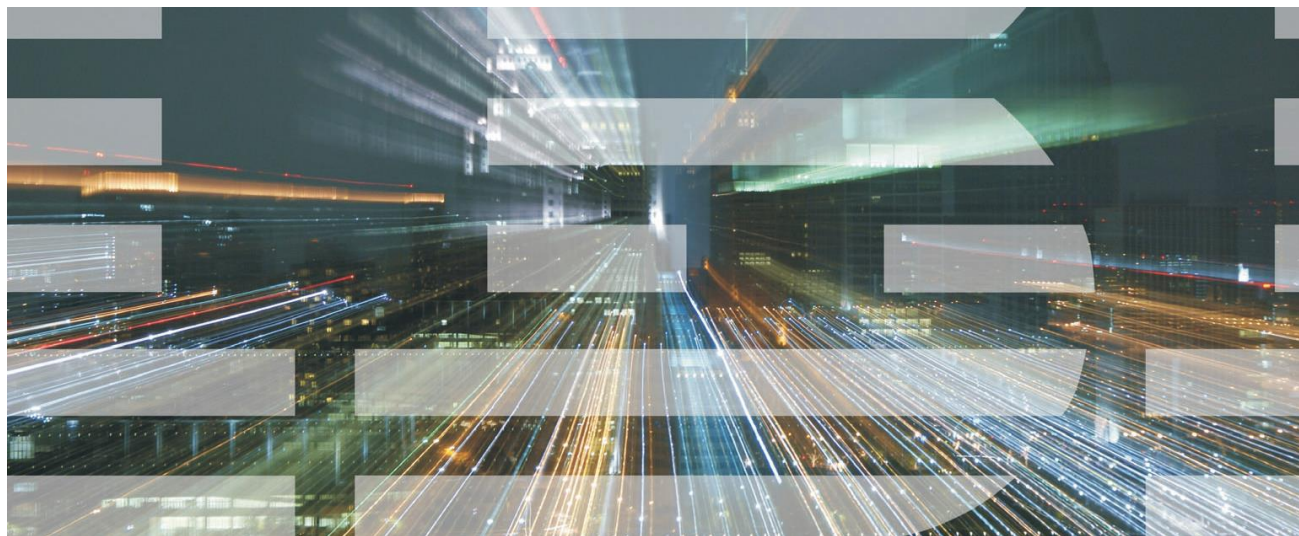


Where does vSphere in a box fit?

- Improve Service
- Reduce Cost
- Manage Risk

Seven primary initiatives:

- Service Management
- Asset Management
 - Virtualization
 - Energy efficiency
- Business Resiliency
 - Security
- Information Infrastructure



So you may have noticed this title I created for this talk months ago was purposely a bit vague:

“Run your VMware datacenter on a laptop, to demonstrate and test VirtualCenter, ESX/ESXi, VMotion, HA, and DRS”

Luckily, I’m now able to demonstrate a largely fully functioning set of 4 VMs, that work in concert to demonstrate successful VMotion of “nested VMs.”

So the focus is on the planned live demonstration of this all actually working, and of course plenty of time planned for questions.



Here's the system requirements to run all 4 below VMs concurrently: Intel VT-d capable machine, 8GB RAM, 64 bit operating system

ESX Server 4.0

The following software is required:

- VMware Workstation 6.5.2 (Build 156735) – presumed to already be installed
- VMware ESX Server 4.0 (Build 164009) ISO image

This installation was tested on a Lenovo T60 laptop computer with the following specification:

- Intel Mobile Core 2 Duo T5600 1.83GHz CPU
- 2GB RAM
- Intel PRO/1000PL Ethernet NIC
- Windows XP Professional with SP3
- VMware Workstation 6.5.2 (Build 156735)

Note: The VMware ESX 4.0 installer will abort if it detects less than 2GB RAM, so the machine running VMware Workstation must have a minimum of this amount of RAM installed. If, as in this example, 2GB RAM is all that is installed, it will also be necessary to configure VMware Workstation to allow most of the VM's RAM requirements to be swapped out to disk. See section 2.1 below.

*above info is from xtravirt.com

2GB of RAM assigned to VM
for install, 1GB afterward

ESXi Server 4.0

The following software is required:

- VMware Workstation 6.5.2 (Build 156735)
- VMware ESXi 4.0 (Build 164009) ISO image

This installation was tested on a Lenovo T60 laptop computer with the following specification:

- Intel Mobile Core 2 Duo T5600 1.83GHz CPU
- 2GB RAM
- Intel PRO/1000PL Ethernet NIC
- Windows XP Professional with SP3
- VMware Workstation 6.5.2 (Build 156735)

Note: The VMware ESXi 4.0 installer will abort if it detects less than 2GB RAM, so the machine running VMware Workstation must have a minimum of this amount of RAM installed. If, as in this example, 2GB RAM is all that is installed, it will also be necessary to configure VMware Workstation to allow most of the VM's RAM requirements to be swapped out to disk. See section 2.1 below.

*above info is from xtravirt.com

2GB of RAM assigned to VM
for install, 1GB afterward

VMware vCenter Server 4

Build 162902 21 May 2009

Windows 2008 Standard, SP1 x64

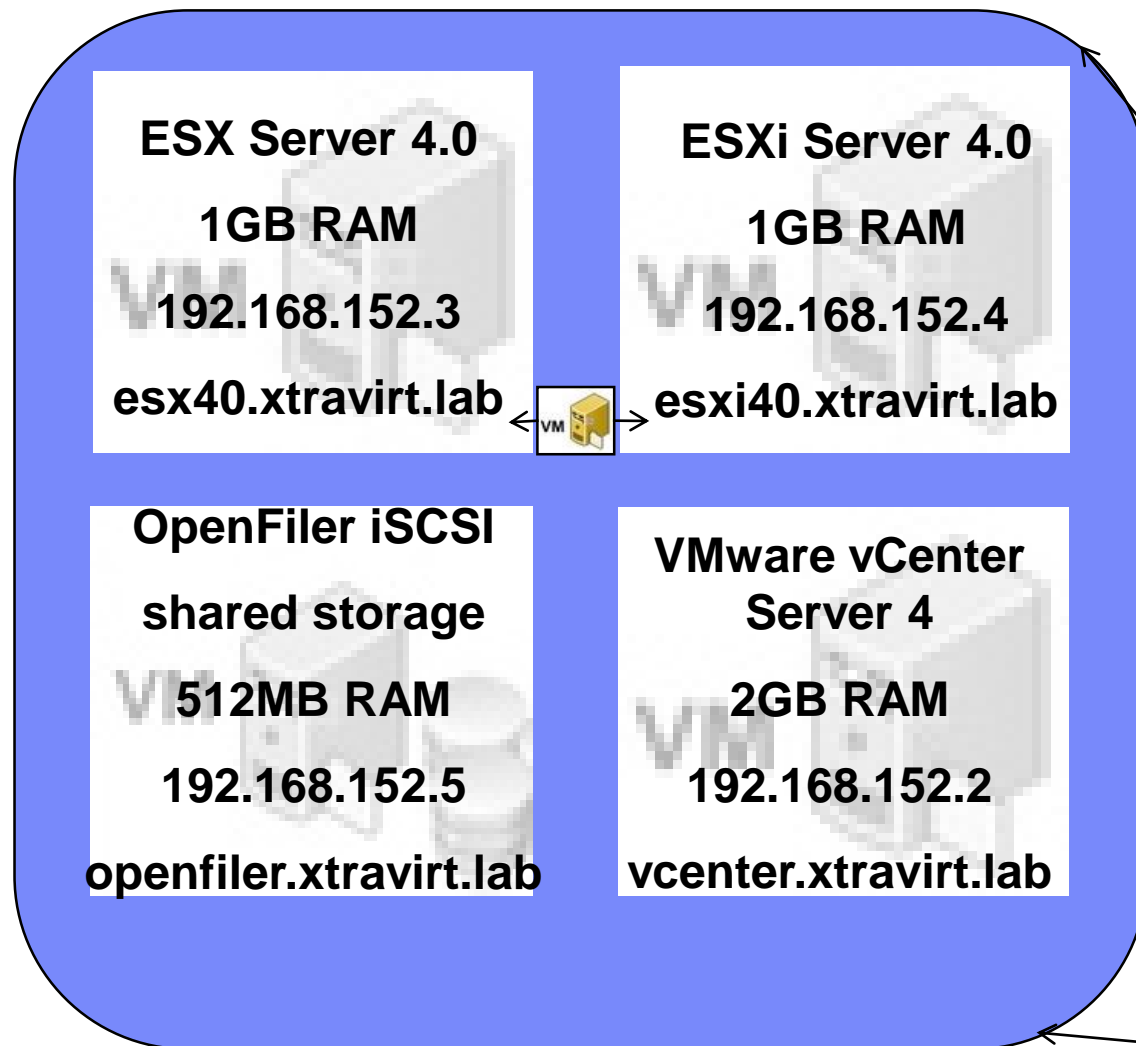
1GB of RAM for VM

OpenFile iSCSI Storage for use with VMware

Linux-based 32 bit VMware Virtual Appliance (largely preconfigured)

1/2GB (512MB) of RAM for VM

Configuration Overview



Lenovo ThinkPad W700

Intel Core 2 Extreme Q9300 (Quad) 2.53GHz

8GB RAM with Vista Ultimate SP2 x64

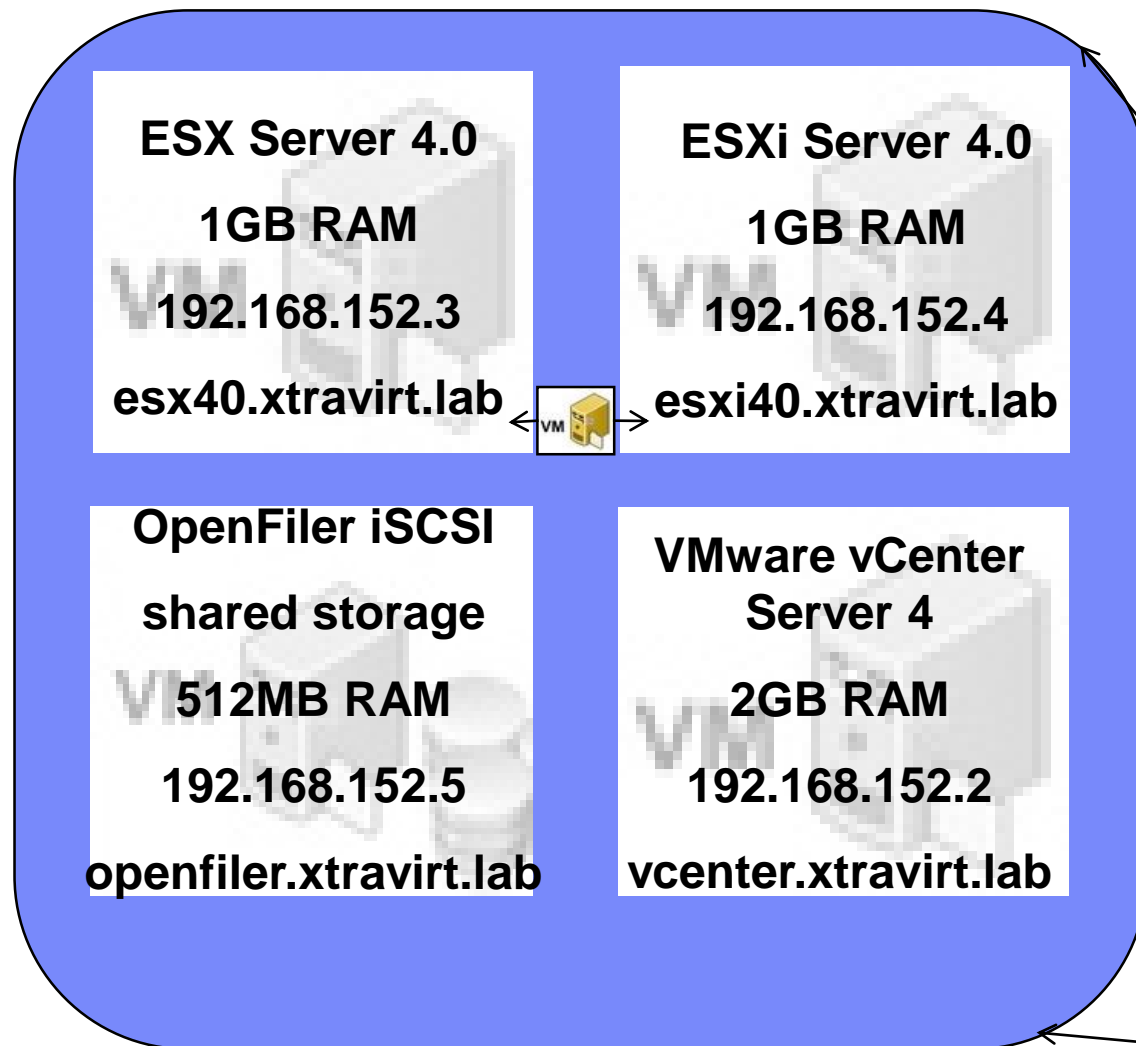
Intel X-25M SSD 80GB C:

RAID0 2x500GB 7200.4 D:

Intel VT-d BIOS feature on



Configuration Overview



Lenovo ThinkPad T61p

Intel Core 2 Duo T7500 (Dual) 2.20GHz

4GB RAM with Vista Ultimate SP2 x64

Internal C: drive 320GB 7200 rpm

External D: drive 200GB (USB 2.0)

Intel VT-d BIOS feature on



Finally, it's Demo Time!

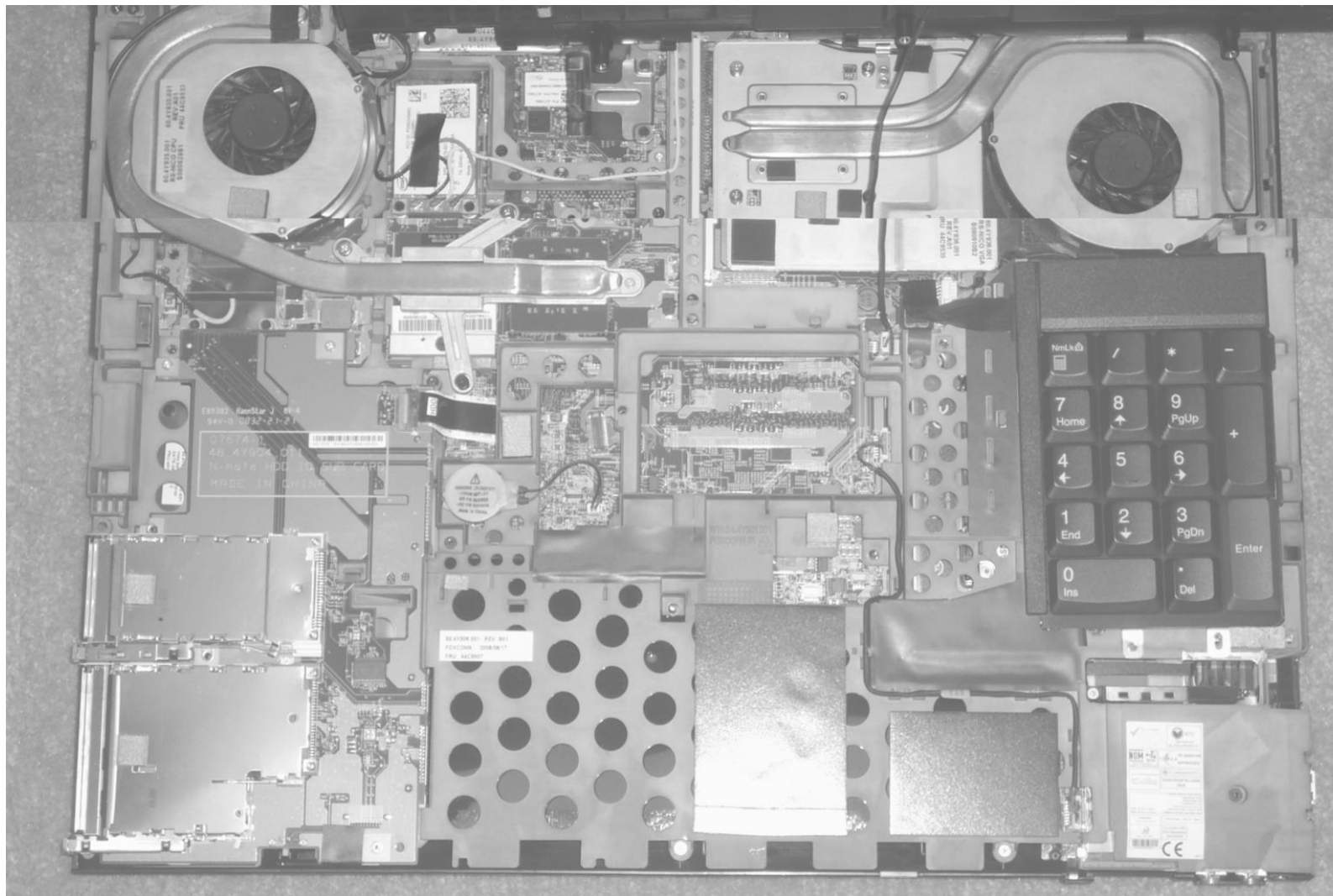
The collage displays four VMware Workstation windows:

- vCenter-w2k3r2sp2_retail - VMware Workstation:** Shows the vSphere Client interface with a summary of the VM 'esx40.xtravirt.lab' (VMware ESX, 4.0.0, 164009). It lists CPU usage (258 MHz), memory usage (710.00 MB), and other details.
- Openfiler NSA - VMware Workstation:** Shows the Openfiler NSA boot screen with a green text-based menu. It includes links for Commercial Support, Administrator Guide, and Community Support, and mentions Openfiler version 2.3.
- ESX4.0test - VMware Workstation:** Shows the VMware ESX 4.0.0 build-164009 boot screen. It displays the VMware, Inc. VMware Virtual Platform logo and provides instructions for downloading tools and opening the ESX console.
- ESX4.0test - VMware Workstation:** Shows the VMware ESXi 4.0.0 Releasebuild-164009 boot screen. It displays the VMware, Inc. VMware Virtual Platform logo and provides instructions for downloading tools and opening the ESX console.

On the right side of the collage, a system tray displays various system metrics and a clock:

- CPU Usage:** 74% (Used: 6596MB, Free: 1525MB, Total: 8121MB)
- Network Meter:** Shows network activity and connection status.
- Calendar:** Displays the date as July 28, 2009.
- Weather:** Shows the current temperature as 72°F and the forecast for Monday, July 28, 2009.
- Clock:** Shows the time as 01:35:10 am EDT Connecticut.

Questions?



Trademarks

The following are trademarks of the International Business Machines Corporation in the United States, other countries, or both.

Not all common law marks used by IBM are listed on this page. Failure of a mark to appear does not mean that IBM does not use the mark nor does it mean that the product is not actively marketed or is not significant within its relevant market.

Those trademarks followed by ® are registered trademarks of IBM in the United States; all others are trademarks or common law marks of IBM in the United States.

For a complete list of IBM Trademarks, see www.ibm.com/legal/copytrade.shtml:

*, AS/400®, e business(logo)®, DBE, ESCO, eServer, FICON, IBM®, IBM (logo)®, iSeries®, MVS, OS/390®, pSeries®, RS/6000®, S/30, VM/ESA®, VSE/ESA, WebSphere®, xSeries®, z/OS®, zSeries®, z/VM®, System i, System i5, System p, System p5, System x, System z, System z9®, BladeCenter®

The following are trademarks or registered trademarks of other companies.

Adobe, the Adobe logo, PostScript, and the PostScript logo are either registered trademarks or trademarks of Adobe Systems Incorporated in the United States, and/or other countries.

Cell Broadband Engine is a trademark of Sony Computer Entertainment, Inc. in the United States, other countries, or both and is used under license therefrom.

Java and all Java-based trademarks are trademarks of Sun Microsystems, Inc. in the United States, other countries, or both.

Microsoft, Windows, Windows NT, and the Windows logo are trademarks of Microsoft Corporation in the United States, other countries, or both.

Intel, Intel logo, Intel Inside, Intel Inside logo, Intel Centrino, Intel Centrino logo, Celeron, Intel Xeon, Intel SpeedStep, Itanium, and Pentium are trademarks or registered trademarks of Intel Corporation or its subsidiaries in the United States and other countries.

UNIX is a registered trademark of The Open Group in the United States and other countries.

Linux is a registered trademark of Linus Torvalds in the United States, other countries, or both.

ITIL is a registered trademark, and a registered community trademark of the Office of Government Commerce, and is registered in the U.S. Patent and Trademark Office.

IT Infrastructure Library is a registered trademark of the Central Computer and Telecommunications Agency, which is now part of the Office of Government Commerce.

* All other products may be trademarks or registered trademarks of their respective companies.

Notes:

Performance is in Internal Throughput Rate (ITR) ratio based on measurements and projections using standard IBM benchmarks in a controlled environment. The actual throughput that any user will experience will vary depending upon considerations such as the amount of multiprogramming in the user's job stream, the I/O configuration, the storage configuration, and the workload processed. Therefore, no assurance can be given that an individual user will achieve throughput improvements equivalent to the performance ratios stated here.

IBM hardware products are manufactured from new parts, or new and serviceable used parts. Regardless, our warranty terms apply.

All customer examples cited or described in this presentation are presented as illustrations of the manner in which some customers have used IBM products and the results they may have achieved. Actual environmental costs and performance characteristics will vary depending on individual customer configurations and conditions.

This publication was produced in the United States. IBM may not offer the products, services or features discussed in this document in other countries, and the information may be subject to change without notice. Consult your local IBM business contact for information on the product or services available in your area.

All statements regarding IBM's future direction and intent are subject to change or withdrawal without notice, and represent goals and objectives only.

Information about non-IBM products is obtained from the manufacturers of those products or their published announcements. IBM has not tested those products and cannot confirm the performance, compatibility, or any other claims related to non-IBM products. Questions on the capabilities of non-IBM products should be addressed to the suppliers of those products.

Prices subject to change without notice. Contact your IBM representative or Business Partner for the most current pricing in your geography.